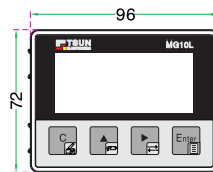
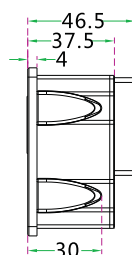


磁性位移测量仪 MG10L

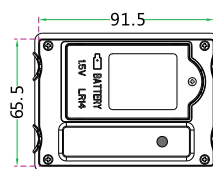
MAGNETIC DISPLACEMENT MEASURING INSTRUMENT



正视图
Front view



侧视图
Side view



底视图
Bottom view

- 显示分辨率: 10um, 50um, 100um, 1mm
Display resolution: 10um, 50um, 100um, 1mm
- 重复测量精度: Ma x 10um
Repeated measurement accuracy: Ma x 10um
- 多功能菜单, 可自由设定参数
Multifunctional menu, are free to set parameters
- 7位LCD显示, 更适合长行程设备
7 bit LCD display, more suitable for long travel equipment
- 按键/菜单可锁定
Buttons/menu can be locked
- 公制/英制可切换
Metric/inch swappable
- 长度/角度测量模式
Length/Angle measurement mode
- 绝对/相对测量模式
Absolute/relative measurement model
- 液晶背光: 清晰醒目
LCD backlight: clearly marked
- 靓丽铝合金外壳四角挤压式塑胶配件安装便捷
Beautiful aluminum alloy shell, four angle extrusion plastic parts, easy installation
- 防护级别高, 抗油污, 抗灰尘
resistance to dust level of protection. oil resistance, resistance
- 非接触式测量, 无磨损
Non-contact measurement, no wear and tear
- 更换电池便捷
Replace the battery is convenient
- 初始值重置功能(清零)
Initial reset function(clear)

特性、技术参数表、备注

| 特性 Features | 技术参数 Technical parameters | 备注 Notes |
|--------------------------------------|--|-------------------------------|
| 测量参数 Measurement parameters | | |
| 系统精度 System accuracy | ±(0.03+0.01)mm | L单位为米 Unit: m |
| 测量/显示范围 Measurement/display range | -999999~9999999 | |
| 显示分辨率 Display resolution | 0.01/0.05/0.1/1 | 单位为: 毫米 Unit:mm |
| 移动速度 Movement speed | Ma x 5m/s | |
| 结构参数 Structural parameter | | |
| 外观尺寸 Outward appearance size | 见右图 See right | 单位为: 毫米 Unit:mm |
| 外壳材料/颜色 Housing material/color | 铝合金 银色 Aluminum silver | |
| 传感器线长度 Sensor cable length | 1米 1M | 可按需订制 Customized on-demand |
| 重量 Weight | 约0.45Kg About 0.45kg | |
| 其他参数 Other parameters | | |
| 后备电源 Backup power supply | 1节1.5V Lr14 Section 1.5V LR14 | 2号电池 2th battery |
| 适用的磁尺 Power supply | MS 500/5mm | |
| 工作温度 Working temperature | -10°C~+60°C | |
| 存储温度 Storage temperature range | -30°C~+80°C | |
| 防护等级 Protection rating | IP54前面板 IP67传感器 IP54 front panel an IP67 sensor | |
| 抗震性能 Seismic performance | 10g(5~100HZ) | DIN IEC68-2-6 |
| 抗冲击性 Impact resistance | 30g/15ms | DIN IEC68-2-27 |

[安装和调试要点, 详见产品说明书:]

Installation and commissioning, see product specifications